

18/51/2026 09:51

Application note

fitlet2 - instructions for installing modem in FC-PCI FACET card

Use case

This application note applies to the use case of ordering fitlet2 with FC-PCI with the intention to install a miniPCIe modem obtained by the customer.

Problem description

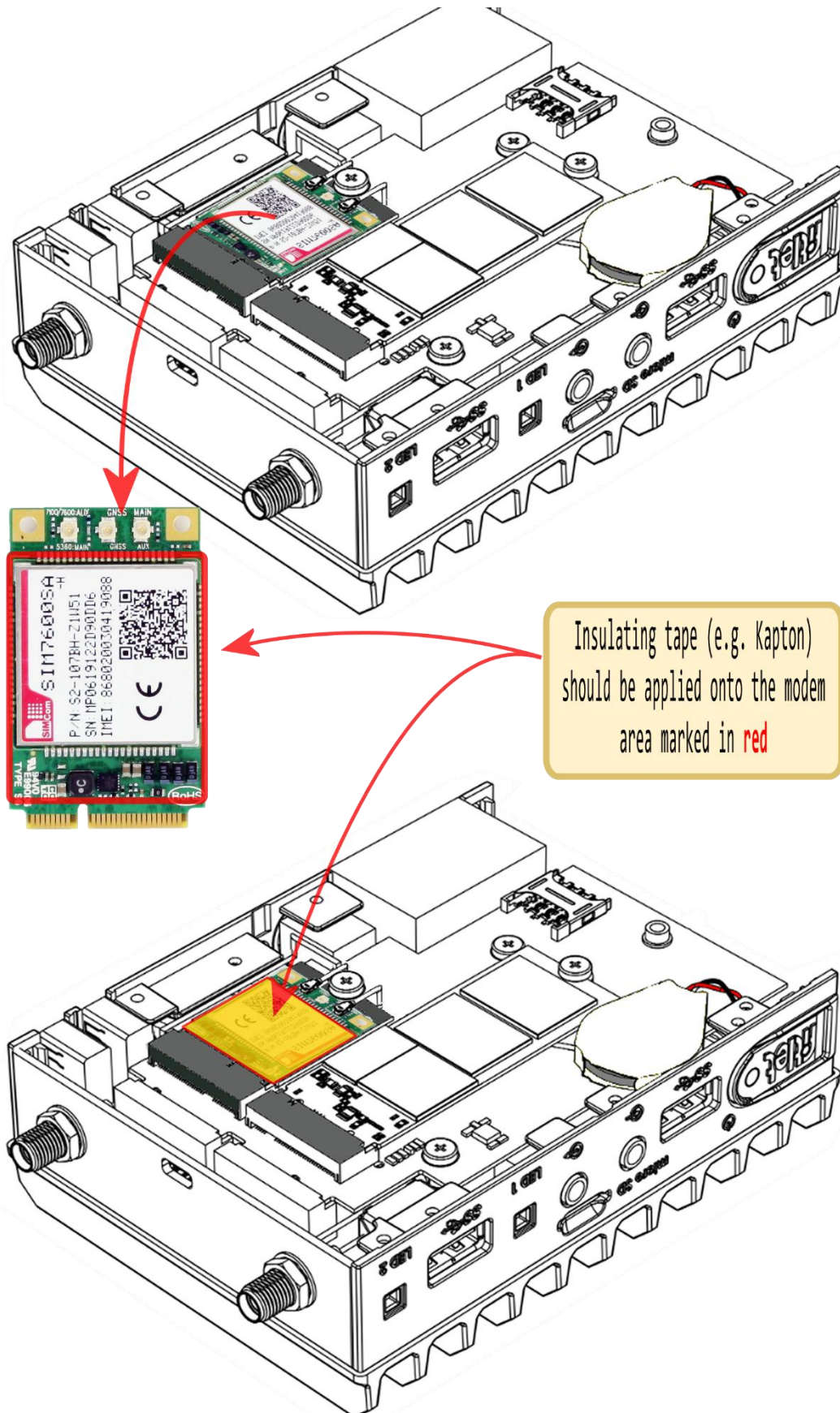
In fitlet2 with FC-PCI, the modem is sandwiched between the FC-PCI and the fitlet2 SBC with limited clearance. Some miniPCIe modems are thick and include tall components.

Due to the limited space between FC-PCI and fitlet2-SBC, there may be a contact between components on the modem and components on the SBC which may lead to a short-circuit on either.

Solution

Before installing the modem, apply a thin insulating tape (e.g. Kapton) onto the modem as depicted below.

Note: please also pay attention to proper routing of the antenna cables from the modem so they are not pinched upon closing.





Fitlet2 page

<https://fit-iot.com/web/products/fitlet2/>

Further information

[https://fit-pc.com/wiki/index.php?title=Fit-PC Product Line: fitlet2](https://fit-pc.com/wiki/index.php?title=Fit-PC_Product_Line:_fitlet2)

Technical support:

Email: support@fit-pc.com

Phone: +972-4 829 0134